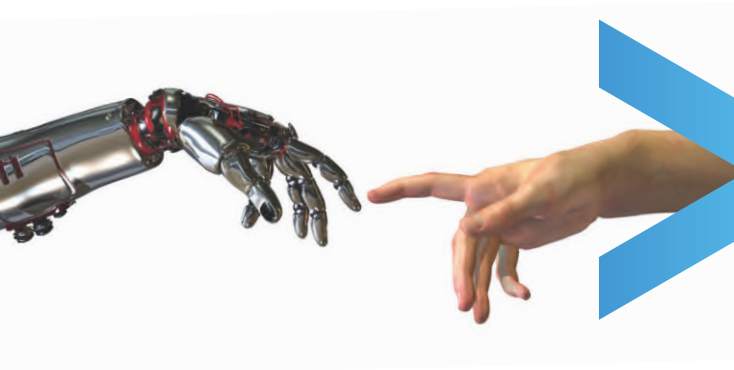




**INDUSTRIAL AUTOMATION IN
MANUFACTURING TECHNOLOGY**



A company established to provide one stop TOTAL SOLUTION for Industrial and Process Automation.

Over the years, Mechatronics has strengthened its operation by providing critical turnkey solutions in **PNEUMATICS, HYDRAULICS, ELECTRICAL, VACUUM AND ELECTRONICS APPLICATIONS**. We have always been customer oriented by way of exhaustive and comprehensive spare parts inventory and knowledge sharing by way of training customer representatives. Mechatronics has been practiced to provide solutions at customer doorstep and effective after sales service backed by state-of-the-art: Sales, Service and Training centre.

At the helms of affairs at Mechatronics are qualified, well trained and customer oriented engineers serving various locations in India at **Delhi, Ahmedabad, Vadodara, Mumbai, Pune, Kolkata, Jamshedpur, Bangalore, Hyderabad and Coimbatore** with its head quarters based in **Chennai** covering other parts of **Tamil Nadu and Pondicherry** and in the **Middle East** such as entire UAE and Qatar with its head quarters at **Dubai** and independent showrooms at **Abu Dhabi, Al Ain and Doha** with full fledged fabrication unit at **Ajman**.

Our application engineers will study your work methodology to offer you an optimum solution, which improves the efficiency and quality of your products produced.

Our speciality is technology upgradation, and to provide complete custom built panels with PLC programming.

Mechatronics has joined hands with pioneers of technology to bring you world class products. Thanks to the reliability and quality of our products and services, which enhances the productivity of our customer in sectors such as **FOOD, STEEL, PHARMACEUTICAL, ALUMINIUM, PLASTIC, METAL, WATER TREATMENT, AUTOMOTIVE, OIL & GAS, ENERGY & POWER, PACKAGING, RUBBER, FURNITURE, TEXTILE** etc.,

0.25 - 0.5 SERIES MICRO GEAR PUMPS


Group	Displacement (cc/rev)	Pressure (bar)
0.2	0.19 to 0.64	190
0.5	0.5 TO 1.50	190

Extensive range and very high performance of these pumps integrated in to micro power packs make them ideal for many applications from aerospace to marine, medical to automotive.

1P SERIES MINI GEAR PUMPS


Group	Displacement (cc/rev)	Pressure (bar)
1P -K1P	1.1 TO 8	230
EK1P	0.9 to 5.8	230

High production rates, performance consistency and absolute reliability ensure this a benchmark product for the hydraulic power pack market.

ALP /GHP SERIES GEAR PUMPS


Group	Displacement (cc/rev)	Pressure (bar)
ALP1/GHP1	1.4 TO 13.8	250
ALP2/GHP2	4.5 to 35.2	250
ALP3/GHP3	20 to 87	230
ALP4	87 to 200	240

This product range includes pumps of different displacements (up to 200cc/rev) in full aluminium configuration (ALP) & Cast iron front flanges and rear cover(GHP), able to withstand medium, to high pressures and using different versions of flangers (European, German and SAE), porting and shafts, used in industrial and mobile sectors

ALP /GHP SERIES MULTIPLE MODULAR GEAR PUMPS


Group	Displacement (cc/rev)	Pressure (bar)
ALP/GHP	1.9 to 200	250

Modularity and flexibility are the characteristics of these pumps. They allow the assembly of pump modules of the ALP and GHP (from 0.25 to 4) enabling solutions to wide range of application requirements.

HIGH / LOW PUMPS


Group	Displacement (cc/rev)	Pressure (bar)
1st Stage	1.1 to 8.3	250
2nd Stage	3.7 to 35.2	Pressure set by unloading value

Ideal pump for applications which require a fast approach and /or return of the actuator at low loads and slow motion of the actuator at high loads. E.g. log splitters, compactors and presses. Volumetric and mechanical efficiencies as well low noise levels are further benefits of this range.

ALPC /GHPC SERIES SHORT MULTIPLE PUMPS


Group	Displacement (cc/rev)	Pressure (bar)
ALPC/GHPC	1.4 to 35.2	270

For reduced axial layout. Available with both flanges and covers in aluminium or cast iron.

ALM / GHM SERIES GEAR MOTORS


Group	Uni-Directional (cc/rev)	Bi-Directional (cc/rev)	Pressure (bar)
ALM1/GHM1	2.8 to 13.8	2.8 to 11	250
ALM2/GHM2	4.5 to 35.2	4.5 to 28.2	250
ALM3 / GHM3	20 to 87	22 to 87	230

For medium to high pressure rates the ALM series is ideal for mobile and Industrial sectors. Mono-directional and bi-directional with internal and external drain available. The GHM series offers identical configurations to the ALM series but more robust thanks to the cast iron front flange and rear cover.

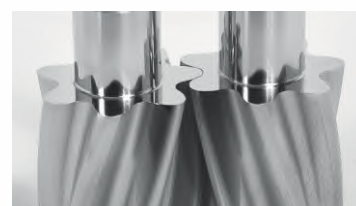
SPECIAL PUMPS AND MOTORS


Thanks to the extreme specification and to the know how of application. Marzocchi Pompe has always a strong interest in evaluating special request from the customers. Requirements that if technically and economically feasible have lead to the development of several solution of special pumps and motors and integrated units as well. Pump will be supplied with relief valve, anticavitation valves, proportional relief valve, priority valve, ext., as per request of the application.

ELIKA SERIES GEAR PUMPS

Low noise, Low Pulsation Gear Pump Elika® Series

ELIKA series pumps with displacement from 7 to 35cm³/rev: perfectly interchangeable with the standard gear pumps ALP2 and GHP2 series. The maximum operating pressures are similar to those of GHP2 series and extend up to 300 bar. The low number of teeth reduces fundamental frequencies of the pump noise, reducing the noise level by an average of **15 dBA** compared with a conventional external gear pump. The simple construction, small size and high performance of ELIKA make this new product very competitive.



PUMPS



Internal & External
Gear Pumps



Fixed Displacement
Vane Pumps



Variable Displacement
Vane Pumps



Variable Displacement Axial
Piston Pumps

PRESSURE CONTROL VALVE



Pilot Operated And Direct
Operated Pressure Control
Valve (Cartridge Type)



Pressure Relief Valve



Solenoid Operated PRV with
unloading & Pressure Selection



Balancing valve (CETOP 05, 07,
08 & NG10, 16, 25)

FLOW CONTROL VALVE



Single and Double Acting
Throttle Flow Control Valve
(Threaded Ports, Cartridge Type)



Pressure and Temperature
Compensated Flow Control
Valve

LOGIC ELEMENTS & FILLING VALVE



Logic Elements



Filling Valves

DIRECTIONAL CONTROL VALVE



Solenoid Operated Directional
Control valve



Pilot Operated Distributor
Solenoid or Hydraulic Controlled



Solenoid Operated Directional
Valve Explosion Proof



Directional Valves with spool
position monitoring



Lever Operated Directional
Control valve



Pneumatically or Hydraulically
operated Directional Control
valve



Poppet type solenoid operated
directional control valve



Bankable directional control
valve

MODULAR TYPE



Direct operated pressure
relief valve



Direct Operated 3 way PRV
valve with Fixed / Variable
adjustment



Flow restrictor valve



Pilot operated check valve

Duplomatic is the leading point of reference within Italy for design and production of devices, components and units for industrial automation and hydraulic engineering.

Duplomatic started to develop and manufacture its own line of hydraulic components, thus branching out from its early aims and acquiring new innovative technical solutions both in the components and plant sectors.

PROPORTIONAL PRESSURE CONTROL VALVE



Pressure control valve with proportional control & integrated Electronics



Pressure control valve in closed loop with direct proportional control and integrated Electronics



Pilot operated Pressure relief valves With proportional control



Pilot operated pressure valves in closed loop with proportional control and integrated electronics

PROPORTIONAL FLOW CONTROL VALVE



Direct operated flow control valve with electric proportional control



Pilot operated flow control valve with electric proportional control



Direct operated flow control valve with electric proportional control and position feedback



Direct operated flow control valve with proportional control and compensation

PROPORTIONAL DIRECTIONAL CONTROL VALVE



Directional valve with Proportional control and integrated electronics



Directional valve with Proportional control and Electrical feedback



Directional valve with Proportional control and Integrated electronics with Monitored spool position



Pilot operated directional valve with Proportional control and Integrated electronics

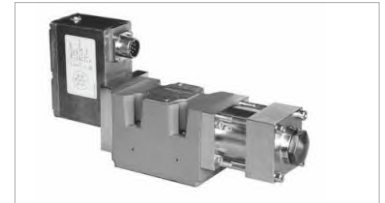
SERVO VALVE



Electro-Hydraulic servo valve with integrated electronics



Electro-Hydraulic servo valve with integrated electronics



Electro-Hydraulic servo valve with integrated Electronics

EXPLOSION PROOF PROPORTIONAL VALVE



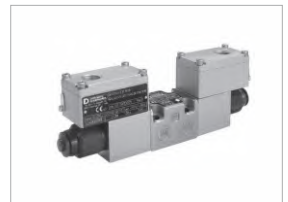
Explosion-proof Proportional directional Control valve



Explosion-proof Balancing valve with Proportional control



Explosion-proof Pressure relief valve with Proportional control, Pilot operated



Explosion-proof Pressure Reducing Valve With Proportional Control

ELECTRONICS & SOFTWARE KITS



Digital amplifier for open loop proportional valves



Analogue positioning card for stroke control in closed loop systems with digital feedback



Digital electronic control unit for open-loop single solenoid proportional valves



Software kit

Product Range

- Pumps
- Pressure Control valves
- Flow control valves
- Hydraulic power pack
- Directional control valves
- Check valves
- Subplates & manifolds
- Modular valves
- Cylinders
- Proportional valves
- Electronic control units
- Pressure gauges, Filters and Accessories

HYDRAULIC CYLINDERS



Hydraulic Cylinder with clevis mounting

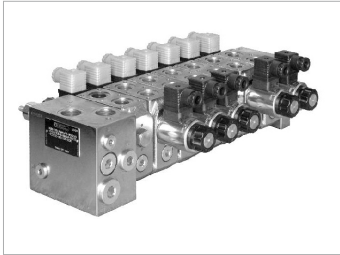


Heavy duty Hydraulic Cylinder

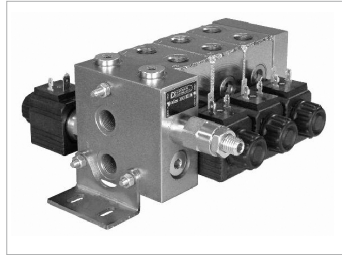


Servo Cylinder

MOBILE HYDRAULICS



Bankable load sensing
Proportional control valve



Bankable directional
Control valve



Six ways bankable
Flow diverter



Self reversing valve



ITALY

www.oleodinamicageco.com

HYDRAULIC MOTORS



Axial - Piston Motor



Orbital Hydraulic Motor

HIGH TORQUE APPLICATION

Torque Range : 15 – 2110 Nm
Speed Range : 150 – 2440 Rpm
Flow Rate : 16 – 240 l/min

CUSTOMIZED HYDRAULIC POWER PACK OF REPUTED MAKES



Compact Power Packs
with Aluminum Tank



Power Packs with
Fabricated Tank



Modular Power Pack for
Machine Tool Application



Power Pack for Energy Sectors

CUSTOMIZED MINI / MICRO HYDRAULIC POWER PACK OF REPUTED MAKES



AC Power Pack With
Cylindrical Tank



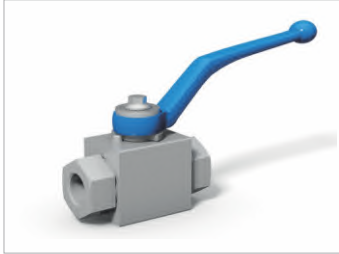
DC Power Pack
With Cylindrical Tank



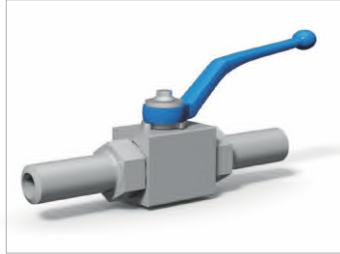
DC Power Pack With
Plastic Tank



DC Power Pack
With Remote option



2/2 way ball valve with threaded connection
Pmax : 250-500 Bar
Size: DN4-50



2/2 way ball valves With welding Ends
Pmax: 160 Bar
Size: DN10-50/65



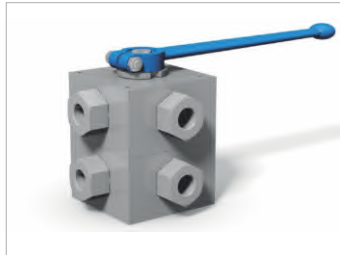
2/2 way ball valves with SAE connection. Pmax: 210-420 Bar. Size: DN13-125
Metric Thread, UNC thread



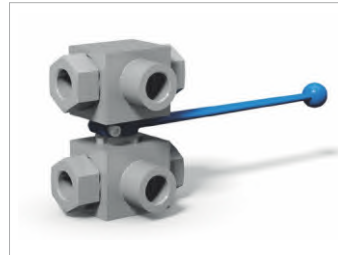
2/2 way ball valve with SAE/ISO/CETOP connection
Pmax:210-420 bar
Size DN13-200



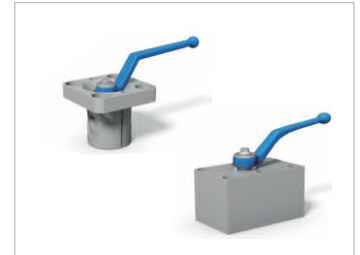
3/2 way ball valve with threaded / SAE Connection
Pmax:315-500 bar
Size:DN4-50



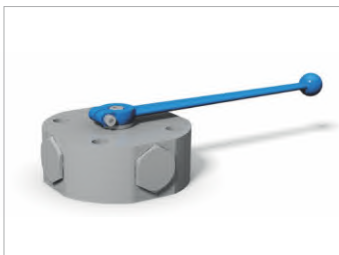
3/4 way ball valve combinations with threaded connections
Pmax:250-500 Bar
Size : DN4-25/40



3/2 way ball valve combinations with threaded connection (Actuation with one handle)
Pmax:250-500 Bar / Size:DN4-50



2/2 way ball valve with manifold mounting / Cartridge –
Pmax:315-500 bar
Size DN6-50



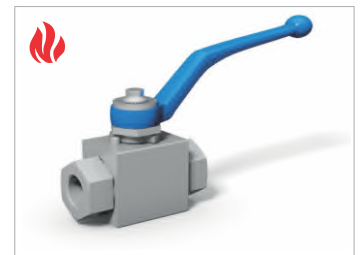
3/4way ball valve for manifold mounting
Pmax: 250-400 Bar
Size:DN 6-40



2/2way highest pressure ball valve with threaded connection
Pmax : 800bar, Size DN6-25



2/2way ball valve for Gas with Threaded connection
Pmax: 160-500Bar
Size: DN4-50



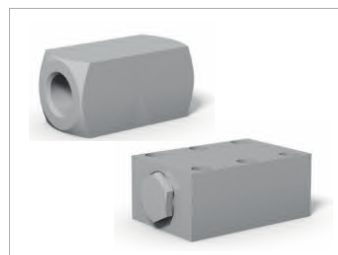
2/2 way ball valve with Fire safe approval
Pmax:210-420 Bar
Size: DN 25-125



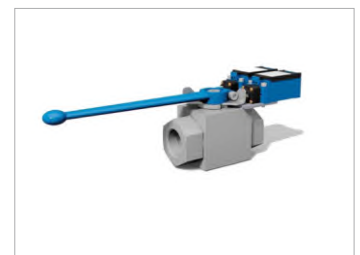
Needle Valves for Piping Systems assembly for manifold mounting / for Cartridge assembly
Pmax:350 bar, Size DN6-40



Flow control valve for piping systems assembly with threaded connections / Manifold mounting
Pmax:350 bar; Size DN6-40



Check valve for piping systems assembly / manifold mounting / SAE connection
Pmax:210-500 bar, Size:DN6-50



2/2 way ball valve with limit switches Pmax:500 bar, Size:DN4-25 / 40



2/2 way ball valve with locking device safety against unintentional actuation / different types / tamper proof. Pmax:500 bar, Size: DN4-25/40



2/2 way ball valve with detents – safety against unintentional actuation. Pmax:500 bar, Size: DN4-25/40



2/2 way ball valve with actuator / pneumatic / electric / hydraulic
Pmax:500 bar, Size: DN4-25 / 40



Levers / Accumulator Block



Level indicator /
Fixing Flanges



Suction strainer/
Suction or Return filter



Spin-on filter / Return filter



High / Medium
Pressure Filter



Visual level gauge / Oil filler
with air breather cap



Heat Exchangers



Foot Flanges



Aluminium and Cast iron
coupling / bell housing



Aluminium Tank
3,6,10,16,25,55,75 ltr



Cleaning covers



Safeplast specializes in producing high quality plastic spirals for many type of hose & people protection.



Timer Control Auto Drain Valve
with Analog and Digital Timer



Combine Filter Ball Valve and
Tmer Control Drain Valve



Timer Control Auto Drain Valve
with Manual bypass Facility



Mechanical Float Type Drain Valve
with Zero Air Leakage

HIGH CAPACITY AUTOMATIC DRAIN VALVES OF REPUTED MAKES



Electronic Condensate Drain
Drain Capacity : 15 l/hr to 150 l/hr
Pressure Range: 0.8 -16 bar
(Standard)
High Pressure up to 60 bar



Pneumatic Operated Condensate
Drain.
Drain Capacity: 50 - 130m³/min
Pressure Range:1.2 - 16 bar



Motorized Ball Valve Type Zero
Air Loss Condensate drain
Drain Capacity : 30 m³/min
Pressure Range: 0-16 bar



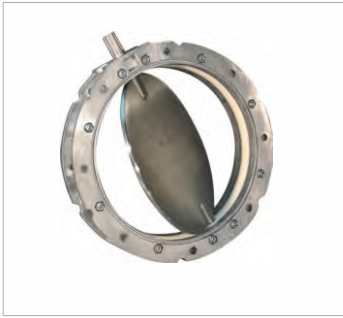
Pneumatic Operated Condensate
drain With Visible Glass
Drain Capacity up to 100 HP
Compressor
Pressure Range: 0 - 14 bar



ITALY

VALVES, FILTERING ELEMENTS & ACCESSORIES

www.mixsrl.it



Butterfly valve



Butterfly valve with Actuator & Solenoid Valve



Butterfly Valve with lever



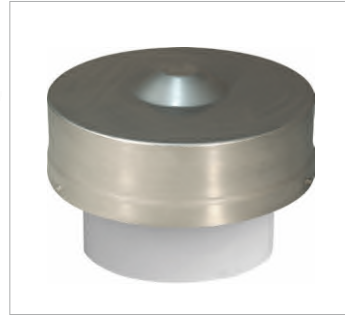
Pulse Jet cleaning cartridge filter



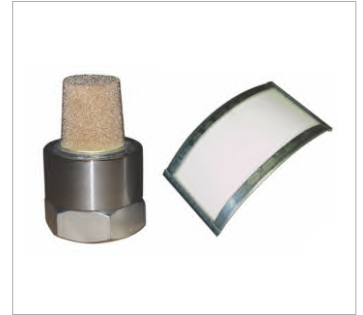
Fan assisted discharge cartridge filter



Level indicator



Pressure relief valve



Aeration Pad / Aeration Nozzle



mebra plastik italia

ITALY

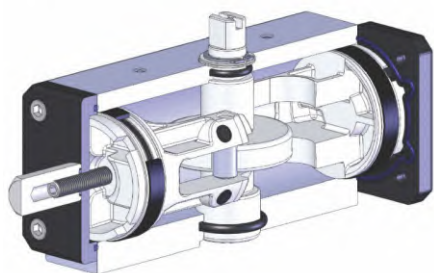
www.membraplastik.com



Material: Polyamide, Polyurethane, Multi layer, Fluoropolymer, Polyethylene.

Type : Linear Flexible, Rigid Hose, Spiral Hose(Straight end hose, with terminals), Thermowelded Polytube, Hose with Textile reinforcement & self lubricated, Fireproof, UV Resistant, Special items etc.

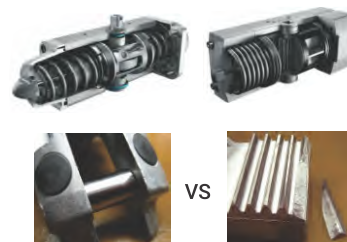
SCOTCH YOKE MECHANISM



Due to oval cam design the torque produced by the actuator follows the curve path of valve torque

FEATURES AND BENEFITS

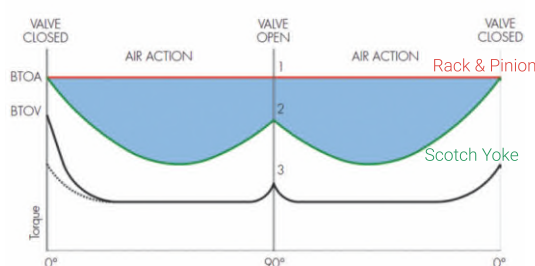
- Smaller volume/size than Rack & Pinion actuators (with the same torque) therefore less space required for installation.
- Less weight than the Rack and Pinion (-30% kg / Nm), with consequent savings on the construction sizing of the plant/equipment.
- Lower air consumption compared to the Rack & Pinion actuators (-40% air cm³/Nm for double acting and -20% air cm³/Nm for spring return) therefore less load on the compressor or the possibility of using a smaller compressor's size.
- Greater Reliability - Long working life more than one million cycles.



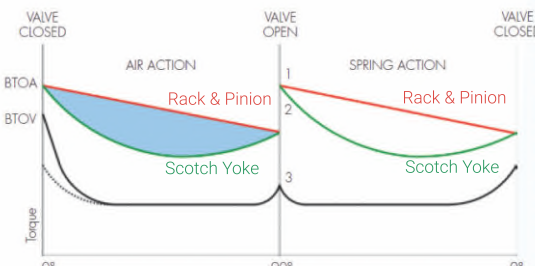
Scotch Yoke Mechanism
(Hardened Steel
48 - 55 HRC)

Rack & Pinion Mechanism
(Typical failure -
Teeth damage)

ENERGY SAVING



D.A. TORQUE DIAGRAM



S.R. TORQUE DIAGRAM

BTOA - Braking Torque of Actuator

BTOV - Braking Torque of Valve



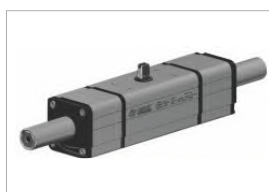
SR Pneumatic Actuator (Torque - 15Nm - 4000Nm)



DA Pneumatic Actuator (Torque - 8Nm - 8000Nm)



DA & SR Pneumatic Actuator with Hand Wheel (Torque - 60Nm - 960Nm)



Two Stage Pneumatic Actuator (Torque - 30Nm - 480Nm)



DA Pneumatic Actuator with Precision Casting Body (Torque - 15Nm - 480Nm)



SR Pneumatic Actuator with Precision Casting Body (Torque - 15Nm - 240Nm)



SR / DA Carbon Steel Solid Bar (Torque - 720Nm - 1920Nm)



SR / DA Actuator SS Solid Bar (Torque - 360Nm - 1920Nm)



Heavy Duty Actuator (Torque - 2000Nm - 30000Nm)



Electrical Actuator (Torque - 10Nm - 1960Nm)

PNEUMATIC ACTUATOR ACCESSORIES



Namur Solenoid Valve



Namur Solenoid Valve with ATEX Coil



Micro Solenoid Valve



Proximity Limit Switch



Pneumatic Limit Switch



Electro mechanical Limit Switch



Limit Switch Box



Explosion Proof Limit Switch



Proximity Limit Switch with Switch Protection



Electro Pneumatic Positioner



Pneumatic Positioner



Aluminium Manual Hand Wheel Gear Box



VIP /Coaxial Valve
Inbuilt actuated valve
Size Range : 3/8" -2"
Pressure Range : PN10



Angle Seat Valve
Material : Bronze & SS
Size Range : 3/8"-2"
Pressure Range : PN16/25



Angle Seat Valve with Different End Fittings
Material : SS
Size Range : 1/2"-2"
Pressure Range : PN16



2 & 3 Way PVC Ball Valve
Size Range : 3/8"-4"
Working Temp : 0°C to +60°C
Pressure Range : PN10

MAGNUM SERIES WAFER BALL VALVE



Flat Body Valve with Hand Lever
Material : Carbon steel
Size Range:1/2"-4"
Pressure Range: PN16-40
ANSI 150-300



Flat Body Valve with DA Actuator
Material : Stainless Steel
Size Range:1/2"-4"
Pressure Range: PN16- 40
ANSI 150-300



Split Body Valve with Electrical Actuator
Material : Carbon steel
Size Range:1/2"-8"
Pressure Range: PN16- 40/63-100
ANSI 150-300/600



Split Body Valve with SR Actuator
Material : Stainless Steel
Size Range:1/2"-8"
Pressure Range: PN16- 40/63-100
ANSI 150-300/600

THOR SPLIT BODY FLANGED BALL VALVE



Split Body Valve with DA Actuator
Material : SS / Size Range:1/2"-8"
Pressure Range: PN16- 40/63-100
ANSI 150-300



Split Body Valve with SR Actuator
Material : Carbon steel /
Size Range:1/2"-8" /Pressure
Range: PN16- 40 / ANSI 150-300



Split Body Valve with Electrical Actuator
Material : SS / Size Range:1/2"-4"
Pressure Range: PN63- 100
ANSI 600/900- 1500



Split Body Valve with Lever Operated
Material : Carbon steel / Size Range:
1/2"-4" / Pressure Range: PN63- 100
ANSI 600/900- 1500

SPECIAL EXECUTIONS ON REQUEST FOR MAGNUM & THOR



Lever and Limit Switch Box



Locking Device



Tank Execution



Manual Gear Box



Manual Gear Box with Limit Switch

BALL VALVE FOR CHEMICAL INDUSTRY



PROCHEMIE 60 SPLIT BODY
with SR Actuator



PROCHEMIE 60 SPLIT BODY
with Welded Steam Extension
with Lever



PROCHEMIE 60 SPLIT BODY
with Steam Extension for
Actuators

SPECIAL EXECUTIONS ON REQUEST



Lever and Limit
Switch Box



Manual Gear
Box



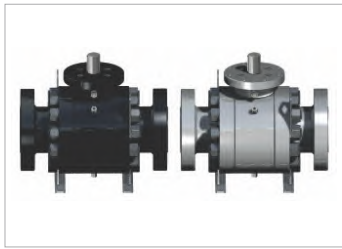
Locking Device
with Stem
Extension

STARK & SPARTON



Casted Ball Valve Manual Version
Material: CS & SS
Size Range: 1/2"-4"
Pressure Range: PN 16-40 / ANSI 150

SUPREME



Trunnion Ball Valve
Material: CS & SS
Size Range: 2"-24"
Pressure Range: PN 20-420

3 WAY BALL VALVE



Magnum Split Wafer 3 Way
Material: CS & SS Size Range:
1/2"-4" / Ports: 'L' & 'T'
ANSI 150-300
Pressure Range: PN16-40



Thor Split Body 3 Way
Material: CS & SS / Size Range: 1/2"-4"
Ports: 'L' & 'T'
ANSI 150 - 300
Pressure Range: PN16 - 40

3 WAY BALL VALVE



Ball Valve with DA Actuator
Material: Brass
Ports: 'L' & 'T' / Size Range: 3/8"-2"
Pressure Range: PN 16



Ball Valve with SR Actuator
Material: SS (Flanged Type)
(Temp: 20 to 160°C)
Ports: 'L' / Size Range: 3/8"-4"
Pressure Range: PN16, 25, 40



Ball Valve with Free Shafts
Material: CS & SS (Temp 10 to 150°C)
Ports: 'L'
Size Range: 1/2"-4"
Pressure Range: PN16, 40



Ball Valve Male Threaded End with DA Actuator Material: SS
Ports: 'L' & 'T'
Size Range: 3/8"-4" (M&F)
Pressure Range: PN16, 25, 40

2 WAY BALL VALVES



Butterfly valve with Hand Lever
Material: Brass
Size Range: 3/8"-3"
Pressure Range: PN16, 25, 40, 50, 64



Three Piece Ball Valve with SR Actuator Material: Stainless Steel
Size Range: 1/4"-4"
Pressure Range: PN63



Threaded End Ball Valve with DA Actuator Material: SS
Size Range: 3/8"-4" (M&F)
Pressure Range: PN25, 40, 63, 100



Flat Body Flanged Ball Valve
Material: Brass
Size Range: 1/2"-2"
Pressure Range: PN16



High Pressure Ball Valve with Hand Lever Material: CS & SS
Size Range: 1/8"-2"
Pressure Range: PN 500



Flanged Full Bore Ball Valve with SR Actuator
Material: SS
Size Range: 3/8"-4"
Pressure: PN16, 25, 40



Butterfly Valve with Lever (Wafer type) Material: Cast Iron
Size Range: 1-1/2" - 24"
Pressure Range: PN10/16



Butterfly Valve with Gear Box (Lug Type) Material: Cast Iron
Size Range: 1-1/2" - 12"
Pressure Range: PN10/16

BUTTERFLY VALVES



Butterfly Valve with DA Actuator (Lug Type)
Material: Cast Iron
Size Range: 1-1/2" - 12"
Pressure Range: PN10/16



Butterfly Valve - Metal (Wafer Type) with SR Actuator
Size Range: 1-1/2" - 8"
Pressure Range: PN16



SS Butterfly Valve with Different End Connection
Size Range: 1" - 4"
Pressure Range: PN16



PVC Butterfly Valve with SR Actuator Temp: 0 to 60°C
Size Range: 1-1/2" - 12"
Pressure Range: PN10/16

PUSH-IN FITTINGS



50000 Series with Red Collet Push-In Fittings
Temp.: -20°C to +80°C
Press.: -0,99 bar to 20 bar
Fluids: Compressed Air, Vacuum



50000 Series with black Collet Push-In Fittings
Temp.: -20°C to +80°C
Press.: -0,99 bar to 20 bar
Fluids: Compressed Air, Vacuum



55000 Series Techno Polymeric Push-In Fittings
Temp.: -20°C to +80°C
Press.: -0,99 bar to 20 bar
Fluids: compressed air , vacuum , water



57000 Series Metallic Push-In Fittings
Temp.: -20°C to +80°C
Press.: -0,99 bar to 20 bar
Fluids: compressed air, vacuum, water, steam (EPDM seal)



40000V Series Metallic Push-In Fittings with FKM Seal Specially for Steam Applications
Temp.: -15°C to +130°C
Press.: -0,99 bar to 20 bar



55000 Series Food & Drink Series
Materials : CW510L Brass Body
Temp.: -15°C to +190°C
Press.: -0,99 bar to 20 bar
Specially For Drinking Water Coffee Machines



70000 Series Certified Food Grade Push-In Fittings
Materials: Nickel Plated Brass
Temp.: -15°C to +200°C
Press.: -0,99 bar to 20 bar



60000 Series Stainless Steel Push-In Fittings
Specially for Food , Chemical Industry
Materials : AISI 316L
Temp.: -15°C to +200°C
Press.: -0,99 bar to 20 bar



89000 Series Inch Tube Push-In Fittings
Materials : Nickel Plated Brass
Temp.: -15°C to +200°C
Press.: -0,99 bar to 20 bar



58000 Series High Pressure Push In Fittings
Materials : Nickel Plated Brass
Temp.: -30°C to +150°C
Press.: 0 bar to 150 bar

PUSH- ON FITTINGS



1000 SERIES
Materials : Nickel Plated Brass
Press.: -0,99 bar to 15 bar
Temp.: NBR -20°C to +80°C | FKM -20°C to +200°C | EPDM -40°C to +160°C
Fluids: COMPRESSED AIR , VACUUM , WATER , INK , LOW PRESS. FLUIDS



INOX 61000 SERIES
Materials : AISI 316L Grade



Materials: Nickel Plated Brass, Al Flow Control Valve | Flow Regulator | Non Return Valves | Block Valves
Press.: -1 bar to 10 bar
Temp.: NBR -20°C to +80°C | FKM -20°C to +200°C
EPDM -40°C to +160°C



Materials: AISI 316L Quick Exhaust Valves | Slide Valves



Materials: Nickel Plated Brass
Temp.: -20°C to +80°C
Press.: 10 bar
Fluids: Compressed Air

ADAPTOR FITTINGS



Materials: Nickel Plated Brass
Press.: 150 bar
Temp.: +300°C
Fluids: compressed air , water , oil
Avail. Sizes : 1/8" to 1"



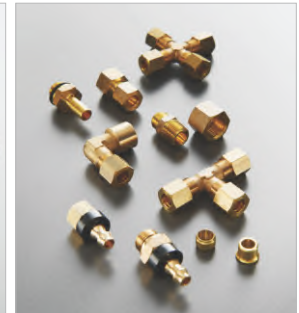
Materials: AISI 316L
Temp.: -110°C to +300°C
Max Press.: -0.99 to 140 bar
Fluids: compressed air , water , oil
Avail. Sizes : 1/8" to 1"



9000 Series (Compression Fittings)
Materials: Nickel Plated Brass
Max. Press.: 128.6 bar
Temp.: -60°C to +300°C



10000 Series(Universal Double Cone Fittings)
Materials: Nickel Plated Brass
Max. Press.: 128.6 bar
Temp.: -60°C to +300°C



13000 Series(Universal Fittings)
Materials: Brass
Max. Press.: 148.4 bar
Temp.: -60°C to +300°C
Avail. Tube Size: 4 - 22 mm

COMPRESSION FITTINGS

AUTOMATIC QUICK COUPLINGS



UNI ISO 6150 B-12



MIGNON



Italian Standard



Inox (Aisi 3161)
Multi Socket



European Standard



Swedish Standard



Japanese Standard



Quick Coupling for
Mold Cooling

MULTI SOCKET



SAFETY QUICK COUPLINGS



European Standard



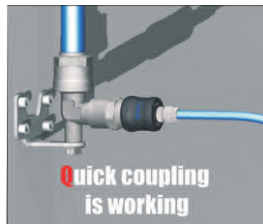
Swedish Standard



UNI ISO 6150 B-12



Italian Standard



Press. Range: -0.99 bar to 20 bar Temp. : **NBR** -20°C to +80 °C **FKM** -20°C to +200 °C
EPDM -40°C to +160 °C **HNBR** -40° to +80° C FLUIDS: Compressed Air , Water, Oil , Inert Gases

GHIUX SERIES BALL VALVES



Materials : Nickel Plated Brass



Handle Colored Plates



Long Handle



Materials : AISI 316L

Temp. : **NBR** -20°C to +80 °C **FKM** -20°C to +200 °C
EPDM -40°C to +160 °C **HNBR** -40° to +80° C

Fluids: Compressed Air , Water, Oil , Inert Gases, Refrigerant Gases
 Connection Types : Threaded , Push-In , Compression , Bayonet

VALVES



Solenoid Valves with Nammur Option
Way : 3/2, 5/2, 5/3
Connection Thread: 1/8", 1/4", 1/2"



Solenoid Assisted Valves
Way : 3/2, 5/2, 5/3
Connection Thread: 1/8", 1/4"



Pneumatic Valves with Nammur Option
Way : 3/2, 5/2, 5/3
Connection Thread: 1/8", 1/4", 1/2"



Manual & Mechanical Valves
Way : 3/2, 5/2, 5/3
Connection Thread: 1/8", 1/4"



Micro Valves



Manifold with Valves



Pedal Valves, Panel Valves, Push Buttons & Selectors, Rotary Hand Lever Valve



Modular Solenoid Valves

CYLINDERS (PNEUMATIC ACTUATORS)



Cartridge Cylinders
Bore Size: 6 to 16 mm
Stroke : 5 to 15 mm



Mini Cylinders
Bore Size: 8 to 25 mm
Stroke : 10 to 320 mm



Compact Cylinder
Bore Size: 12 to 100mm
Stroke : 5 to 200mm



Short Stroke Cylinder
Bore Size: 12 to 100mm
Stroke: 5 to 100 mm



ISO 1552 Cylinder
Bore Size: 32 to 125mm
Stroke: 5 to 100mm
Demand Up to 2700mm



ISO 6431 Cylinder
Bore Size: 32 to 320mm
Stroke: 25 to 1000mm



Rotary Cylinders
Bore Size: 32 to 100mm
Angle of Rotation : 90°, 180°, 270°, 360°



Rodless Cylinder with V Edge Slide System
Bore Size: 16 to 63mm
Stroke: 100 to 5700mm



Guide Units



Pneumatic Angular Gripper



Wide Type Pneumatic Gripper



Pneumatic 3 Fingers Gripper

AIR TREATMENT UNITS



Mini Series



Standard Series

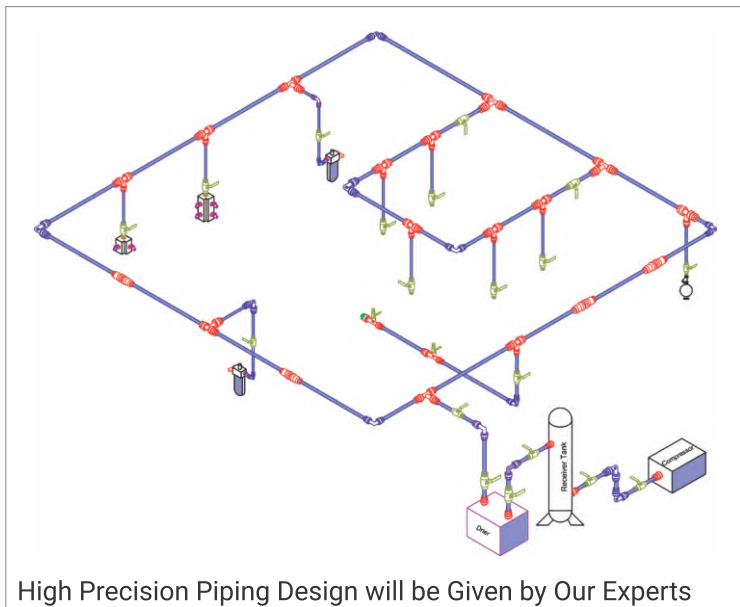


Compressed Air Piping

High Performance Aluminium Piping Systems



3D Cad Model

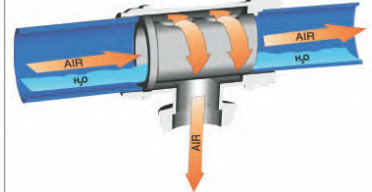


Products Highlights

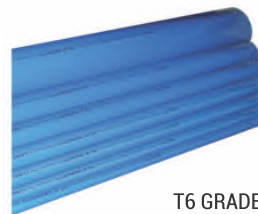
Patented Technology



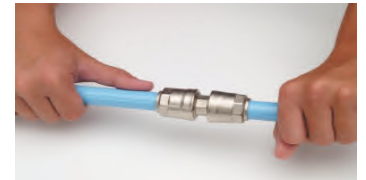
Eliminates the need for a conventional swan neck fitting



Block condensate from reaching equipment



T6 GRADE
Inside Treated

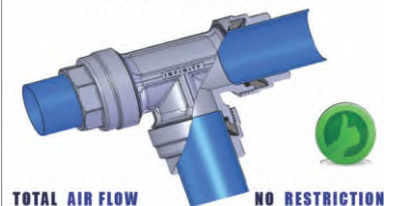


One Touch Installation
leak free



Multiple Output from
single input

THE METAL FITTINGS



Infinity Benefits

- ▶ No Need for Swan Necks
- ▶ Non Corrosive Extruded Aluminium T6 Grade
- ▶ Total Metal System
- ▶ Simple Push In type Fittings
- ▶ Consistent air quality to every outlet
- ▶ Complies with Australian and European safety standards
- ▶ Fully adjustable and ideal for future expansion
- ▶ Adapts to all existing pipe systems

AVAILABLE DIAMETERS : 20,25,32,40,50,63,80,110 mm

Pipe Internal Coating: Fluorine - Zirconium

Pipe External Coating: Epoxy polyester Powder

NO
DRILLING
WELDING
THREADING



Power Saving



Fire Retard



10 Years Warranty



No Leakage



Quick Installation

Compatible Fluids: Compressed Air, Vacuum, Nitrogen, Argon, Azoto, Industrial Oxygen
Pressure: -0.99 to 16 bar TEMP: -20°C to +80°C

HIGH QUALITY PRESS FITTINGS PIPING SYSTEMS

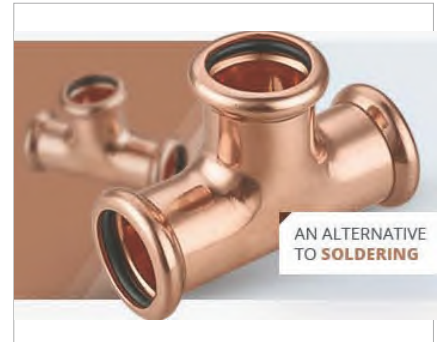
Product Range



Kan-Therm Inox System is a comprehensive, model steel installation consisting of precision pipes and connectors made of a high quality stainless steel within 15 - 168.3mm range of diameters.



Kan-Therm Steel System is a comprehensive, model steel installation consisting of precise tubes and connectors made of a high quality carbon steel (coated with anticorrosive zinc outside). The range of diameters: 12 - 108mm

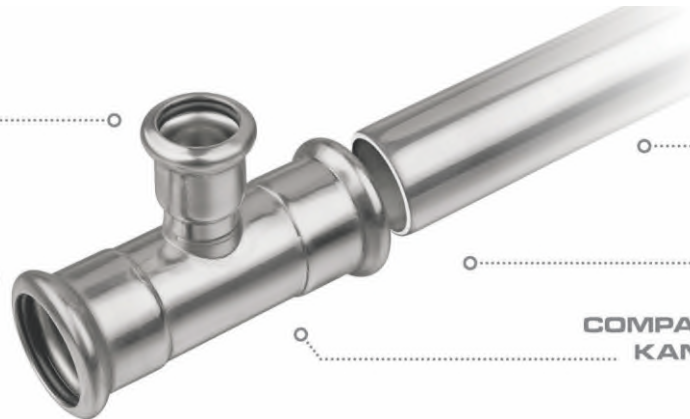


System Kan-Therm Copper is a modern installation system consisting of high quality fittings made of CU-DHP Copper and 2.109 bronze in diameter range Ø12mm - Ø108mm. The use of the 'Press' connection technique guarantees simple installation and trouble free operation of the installation.

**QUICK AND RELIABLE
SYSTEM ASSEMBLY
WITHOUT WELDING
AND THREADING**

**WIDE RANGE OF
OPERATIONAL
TEMPERATURES:
FROM -35°C
UP TO 135°C**

**SYSTEM HIGH
AESTHETICS**



**WIDE RANGE
OF DIAMETERS
UP TO 168,3 MM**

**HIGH PRESSURE
RESISTANCE
UP TO 16 BAR**

**COMPATIBLE WITH OTHER
KAN-THERM SYSTEMS**



**1
Cutting the pipe
to length**



**2
Inserting the pipe
into the press fitting**



**3
Making the press
connection**

System Advantages

Wide range of pipes and connectors diameters: 12 - 108mm | Wide range of working temperatures -35°C - +135°C | Resistance to high pressure - up to 16bar | Low flow resistance in pipes and fittings | Possible connecting with Kan-ThermPlasticelements/systems | Low weight of pipes and fittings | Mechanical strength | No fire hazard during assembly and operation (A combustibility Class) | Very good look of the system

VACUUM AUTOMATION

SUCTION CUPS



Value Line Cups

Good performance at value price

Available size: 20 - 75mm

Application: Carton and cardboard erection, metal /wood sheet loading and unloading, parts removal from injection molding machine.



piGRIP

The piGRIP is a modular suction cup that allows to choose the ideal combination of lip, bellow & fittings.

Available Size: 15 - 150mm

Application: Cardboard, sheet metal, glass and porous materials
DURAFLEX-High friction suction cup
FDA - Food grade silicon material
Mark Free - TPU material



Flat Family (F)

Available Size: 15 - 150mm

Application: Cardboard, sheet metal, glass and porous materials.



Bellows Family (B)

Available Size: 5 - 150mm

Application: Bellows cups in one lifting device can handle objects with different heights and varying shapes.

VACUUM PUMPS



COAX® Technology Multi Stage Ejectors upto Three Stages



piINLINE Family

Features

Low weight inline design with push-in fittings. Quick and easy installation directly on the hose.

Application

Injection molding automation equipments sheet metal handling such as laser cutting, bending and punching machines pick and place such as labelling machines.



Value Line Ejectors

Features

Value line is Piab's line of cost - effective automation components offers good performance at cost effective pricing. Inline design and T-design with push-in fittings

Application

Sheet metal loading and unloading, case and carton erecting, parts and removal-injection molding automation



VGS Family

Features

It makes installation of a vacuum system easier and it can assemble with different suction cups.

Application

Sheet metal handling such as laser cutting, bending and punching machines.



Compact / Stackable

Features

Slim, compact, configurable and modular design

Application

Mainly for automated vacuum handling applications with robot or dedicated machines.



Standard

Features

It provides powerful, whisper- quiet and non-heat generating suction at extremely low feed pressures and modular design makes easy cleaning of ejectors.

Application

Robot handling equipment in plastic, consumer, furniture and automotive industries & packaging machines.



EXTRA SAFETY piSECURE

Features

It combines high security and the most energy-efficient. It suitable to use as decentralized for maximum safety feed pressures modular design makes for easy cleaning of ejector cartridges and gives opportunity to upgrade the performance design.

Application

Fragile material handling such as glass and heavy weight sheet metals.



Round Pump

Features

It is designed for high vacuum flow with 6x COAX Si MIDI cartridge. Still it is small, compact and light weight(1.6kg)

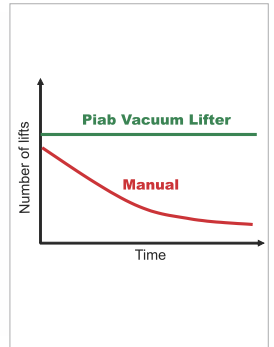
Application

Used to transfer waste fluids in vacuum toilets.

VACUUM TUBE LIFTER

Benefits

- ▶ Reduce load on the body upto 80%
- ▶ Increase Productivity
- ▶ Faster and Safer loading/unloading
- ▶ Lifts objects in all Sizes and Shapes
- ▶ Reduce injuries
- ▶ User-friendly grip and lift in one move
- ▶ Able to handle upto 250kg
- ▶ Application specific solutions
- ▶ Available in several ATEX certified versions



Application Images



Plywood Lift/Tilt/Rotate



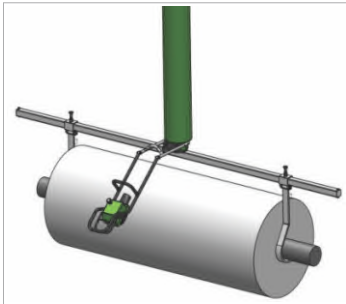
Drum Lift



Sack Bag Lift



Sheet Metal & Glass Sheets
Lift/Tilt/Rotate



Fabric Roll Lift



Carton Box Lift



Rubber Bale Lift

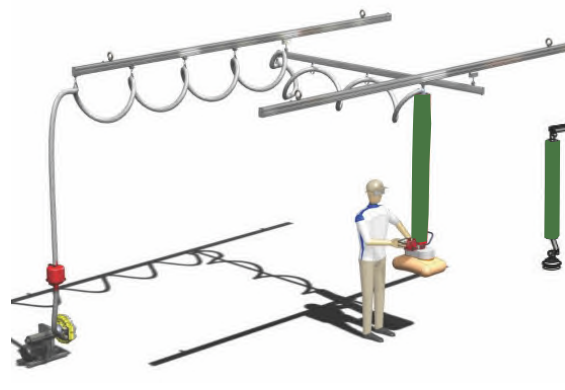


Tray Lift

Piab OverHead Systems



Jib Crane



Bridge Crane











Movable Mobi Arm

DESKLINE system

Electric Height Adjustable Columns and Controls



DL5  Feet SetPack IC Speed : 38mm/sec Max Thrust:800N/leg BID/Stroke : 645/500mm BID/Stroke : 445/300mm	DL6  Feet SetPack PIEZO PLUS IC Speed : 38mm/sec Max Thrust:1200/800N/leg BID/Stroke : 560/650mm BID/Stroke : 518/660mm	DL11  Feet SetPack PIEZO IC Speed : 38mm/sec Max Thrust:800/600N/leg BID/Stroke : 740/965mm BID/Stroke : 575/635mm	DL15  SetPack IC Speed : 38mm/sec Max Thrust:800 N/leg BID/Stroke : 645/500mm
DL12  Speed : 38mm/sec Max Thrust:700/600N/leg BID/Stroke : 700/999mm BID/Stroke : 545/660mm	DL14  Feet Speed : 38mm/sec Max Thrust:700N/leg BID/Stroke : 525/660mm	DL19  SetPack PIEZO IC Speed : 38mm/sec Max Thrust:800N/leg BID/Stroke : 560/650mm	DL2  Speed : 20mm/sec Max Thrust:1000/1500/2500N/leg BID/Stroke : 655/500mm BID/Stroke : 505/350mm

DeskLine Features:

Desk Sensor 1



Based on gyroscopic technology, the Desk Sensor 1 (DS1) protects your desks from being damaged by hard and soft obstacles. It comes in a small unit, easy to add to any LINAK desk system. Just Plug & Play™

- Reacts to soft and hard objects
- Small unit easy to plug in, no extra mounting
- Compatible with all LINAK desk systems

PIEZO™



PIEZO Anti-Collision is a hardware-based sensor integrated in the lifting column and requires no extra installation. Most DL columns from LINAK come with PIEZO as an option.

Bench Bracket



For easy integration with bench solutions, add a bench bracket to our rectangular and square profile columns



- DPG1C**
- Intuitive Desk Panel
 - Reminder
 - 4 Memory Positions
 - Display
 - Bluetooth®

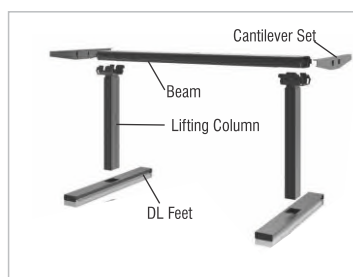


LINAK Desk Control Basic App for Smartphone



IC (Integrated Controller)

- comes with a set of two lifting columns
- A master column with a built-in controller and a slave column
- Economical Version
- No need of control box
- Simple installation
- Smart



DeskFrame 2 :

- A telescopic solution fits table width 1200 to 1800 mm
- Contains the motor and all electronics
- Max. load 800 N per column



Kick and Click and Desklift Feet:

- Fits desks of upto 2m/1.2m
- Adjustable version = 2m
- Fixed version = 1.2m



- DPF with Display**
- Modern Display
 - Up and Down Drive
 - 3 memory positions in DPF1C
 - Dipaly with white LED



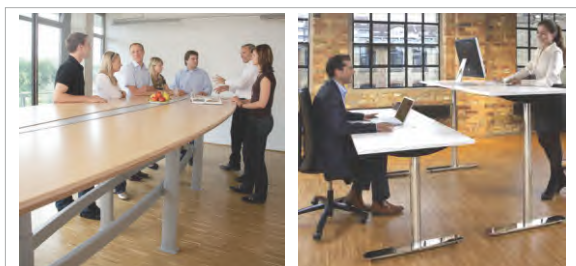
- CBD6S**
- Compact/light weight
 - Zero™ standby power consumption
 - PVC-free as standard plug and play with all lifting columns up to 4 channels in parallel



- DPA**
- Adjustable Panel
 - Simple Control
 - Up / Down



- DPH**
- Up and Down function via the arrows
 - Easily integrated in the table top



Height adjustable tables



TV Lift using columns



Bed lift using actuator



Electric linear actuator solutions

Electric linear actuators are the perfect solution when you need simple, safe and clean movement with accurate and smooth motion control. You may choose actuator systems for adjustments, tilting, pushing, pulling and lifting with thrusts up to 15,000 N.



- LA12**
- Compact design
 - Robust
 - Thrust : 750N
 - Speed : 5-40 mm/s
 - Stroke : 90 - 130 mm



- LA 14**
- Heavy-duty aluminium housing
 - Thrust: Max. 750N
 - Speed: Max. 8-45mm/s
 - Stroke : 90 - 130 mm



- LA20**
- Compact and slim
 - Thrust: Max. 2500N
 - Speed: 8.9mm/s
 - Stroke : 20 - 300mm



- LA23**
- Compact design
 - Strong
 - Thrust: Max.2,500N
 - Speed:3-12 mm/s
 - Stroke : 20 - 300 mm



- LA25**
- Compact design
 - Strong
 - Thrust: Max.2500N In push & Pull
 - Speed: Max. 2.5-25mm/s
 - Stroke : 20 - 300 mm



- LA33**
- Compact design high power
 - Thrust: 5000N
 - Speed: 35mm/s
 - Stroke 100 to 600mm



- LA34**
- Compact design
 - Thrust: Max. 10,000N in push and 6,000 N in pull
 - Speed: 5-18 mm/s
 - Stroke : 100 - 600 mm



- LA35**
- Powerful and low noise
 - Thrust: Max.6000N
 - Speed 16mm/sec
 - Stroke 100 to 600mm



- LA36**
- Powerful
 - Outstanding performance
 - Thrust: 10,000 N
 - Speed: up to 7 -160 mm/s
 - Stroke : 100 - 999 mm



- LA37**
- Powerful
 - Heavy Duty
 - Thrust: 10,000N – 15,000 N
 - Speed: 3 - 10 mm/s
 - Stroke : 100 - 1000 mm



- Columns**
- LP2:
 - Max. Thrust: 6,300N
 - Max. Speed: 5-21 mm/s
 - Stroke : 200 - 500 mm



- Columns**
- Lc2:
 - Max. Thrust: 5,000 N
 - Max. Speed:18mm/s
 - Stroke : 100 -500 mm



- Columns**
- BL1:
 - Max. Thrust: 2,000 N
 - Max.Speed: 12 - 46 mm/s
 - Stroke : 248 - 400 mm

Electric actuator system

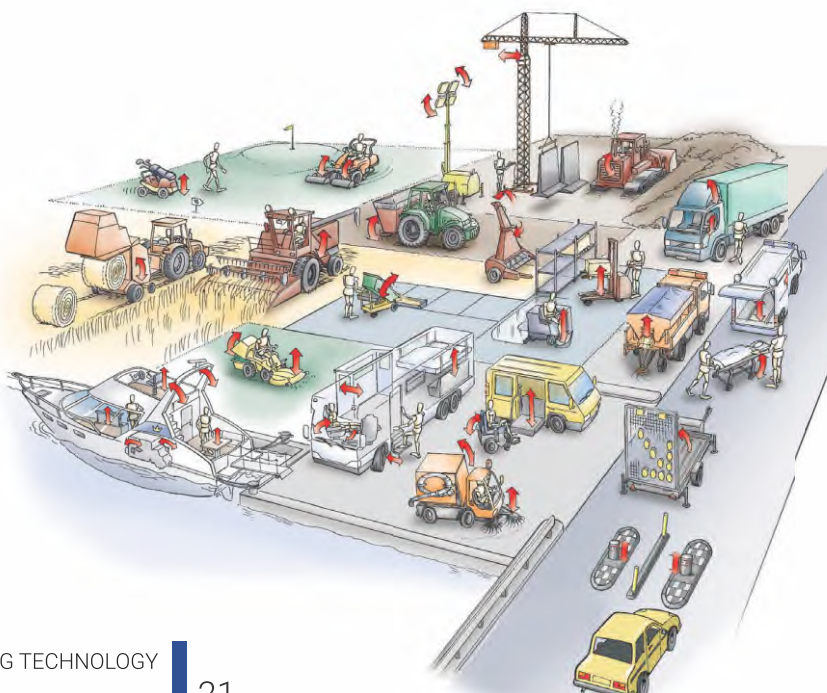
- Simple system of actuator, control and power connection
- Easy installation due to few components
- Integrated positioning
- Maintenance-free
- Low energy consumption

Advantages :

1. Long life time
2. No maintenance
3. Very low operating cost
4. Quiet & clean
5. Non – toxic & energy efficient
6. Easy to install

Testing :

- Climatic test
- Weather protection
- Salt spray test
- Chemical test
- Electrical tests
- Mechanical tests (Vibration, Shock, Bump)



ELECTRICAL LINEAR ACTUATOR SOLUTIONS WITH TRAPEZOIDAL SCREW

DC LINEAR ACTUATOR CX.LAT7.2168



Options



BP Balancing
Pivots



HS Hall Sensor
Encoder



PTC Hall Sensor
Encoder with PTC

Features:

Gears in sintered steel
Working Temperature: -20°C ~ +80°C
Gear ratio: 1:12, 1:27, 1:48, 1:108
Stroke: 50, 100, 150, 200, 250, 300, 350, 400mm
Trapezoidal Screw : Ø8.8mm Pitch 3mm
Load =300N-3500N
Max Speed= 44.5mm/sec
Nominal Current= 0.8 - 1.2 Amps

Motor Data:

DC Carbon-brush motor
Nominal Voltage: 12/24Vdc
No Load Speed: @12V 6900rpm @24V 13800rpm
No Load Current: @12V 0.15A @24V 0.17A
Rated Speed: @12V 5756rpm @ 24V 12000rpm
Rated Current: @12V 0.76A @24V 1.14A
Rated Torque: @12V 96g-cm @24V 156g-cm



ENERGY AND COMPRESSED AIR SAVING BLOW OFF PRODUCTS



Blow Gun with High Thrust Nozzle

- || Air amplification upto 3 times
- || Lower noise level
- || High thrust
- || Rugged stainless steel construction
- || Thrust: 1500gms
- || Thrust: 340 gms @300mm, 99db



Blow Gun with Silent Nozzle

- || Significant reduction in noise levels without sacrificing thrust
- || Improves operator comfort and reduces fatigue
- || Air consumption 12SCFM - Thrust: 340gms @300mm, 84db



Blow Gun with Die Cleaning Nozzle

- || Developed for cleaning of investment casting dies
- || Air consumption 16 CFM
- || Thrust 455gms @300mm db86



Coolant Gun

- || High flow design
- || Independent control of flow rate
- || Adjustable flow pattern
- || Inlet coupler available as optional accessories



Vac Blow Gun

- || Unique deep hole cleaning system
- || Capable to clean blind holes from Ø6mm to Ø30mm & up to 300mm depth
- || Washable dust / chip collection bag
- || Light weight
- || Air consumption 20SCFM



Vac in Line

- || High volume air blow, low noise
- || Can be used for conveying plastics pallets, small parts, food grain, husk, sugar, etc.,
- || Available in aluminum and stainless steel construction



Moisture Separator With Prefilter

- || Point of use water and mist separator with 1 micron prefilter with 80% efficiency
- || Provides excellent quality clean air to devices
- || It does not reduce dew point temperature
- || Very low maintenance, long filter element



Barrel Emptying System

- || Compressed air operated barrel emptying system
- || Suitable for plastic barrel and steel barrel
- || Very low compressed air consumption
- || Built in safety valve for over pressure protection
- || No motor, no spark or motor burn out



Coolant Spray Nozzle

- || Low air consumption
- || Coolant mist for effective cooling and reduced coolant consumption
- || Adjustable air to coolant ration



Suction Unit

- || Compressed air operated, built in spill prevention
- || Fits on 280mm diameter standard drum/pail
- || Supplied with steel pail of 20 litres



Barrel Filling & Emptying System

- || Compressed air operated, fast, efficient, maintenance free
- || Compatible with standard 200 litre metal barrel
- || No motor, sparks or motor burn out
- || Auto over fill prevention

Lift-O-Mat Gas Spring



Lift-O –Mat PTL Gas Spring



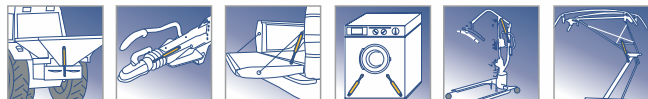
Inoxline Gas Spring



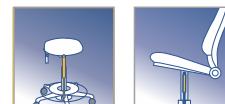
Bloc-O-Lift Gas Spring



Stab-O-Shoc Gas Spring



Stab-O-Mat Gas Spring



Gas spring assembly programme



Stabilus Gas Springs, Gas Struts & Dampers



Bloc-O-Lift Gas Spring with Soft Touch Button



Lift-O-Mat Gas Spring with Locking Tube



AIR CONDITIONING VALVES

PRODUCT RANGE



SOLENOID VALVES

Solenoid valve 30000 series are designed for installation on commercial refrigeration system on civil and industrial air conditioning plants



Solenoid Valve - Brazing Type

Sizes = 1/4, 3/8, 1/2, 5/8, 7/8, 3/4, 1 1/8, 1 3/8"
 Max Pressure = 52 bar
 Type= NC/NO
 Power = 12/24/210/220/230Vac
 O-ring = HNBR
 OPD = 0 - 21 bar



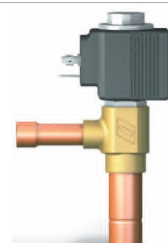
Solenoid Valve - Flare Type

Sizes = 1/4, 3/8, 1/2, 5/8, 3/4"
 Max Pressure = 52 bar
 Type= NC/NO
 Power = 12/24/210/220/230Vac
 O-ring = HNBR
 OPD = 0 - 21 bar



Solenoid Valve - Fast Lock Type

Sizes = 1/4, 3/8, 1/2"
 Max Pressure = 52 bar
 Type= NC/NO
 Power = 12/24/210/220/230Vac
 O-ring = HNBR
 OPD = 0 - 21 bar



Electrical Expansion Valve Brazing Type

Sizes = 3/8, 1/2, 5/8"
 Max Pressure = 52 bar
 Power = 12/24/210/220/230Vac
 O-ring = HNBR
 OPD = 0 - 21 bar

Refrigerant Fluids - Compatibility: R404A, R407C, R410A, R507, R32, R134A, R1234ze, R448A, R449A, R450A, R1234yf, R1233zd

CHECK VALVES



Check Valve - Brazing Type

Sizes = 1/4, 3/8, 1/2, 5/8, 3/4, 7/8"
 Max Pressure = 52 bar
 O-ring = HNBR



Check Valve - Flare Type

Sizes = 1/4, 3/8, 1/2, 5/8, 3/4"
 Max Pressure = 52 bar
 O-ring = HNBR



Check Valve - Brazing Type

Sizes = 7/8", 1 1/8, 1 3/8, 1 5/8, 2 1/8"
 Max Pressure = 52 bar
 O-ring = HNBR



Check Valve - w/o Pipe

Sizes = 7/8", 1 1/8, 1 3/8, 1 5/8, 2 1/8"
 Max Pressure = 52 bar
 O-ring = HNBR

LIQUID & MOISTURE INDICATORS



Liquid & Moisture Brazing Type

Sizes = 1/4, 3/8, 1/2, 5/8, 3/4, 7/8, 1 1/8"
 Max Pressure = 52 bar



Liquid & Moisture Flare Type

Sizes = 1/4, 3/8, 1/2"
 Max Pressure = 52 bar



Liquid & Moisture Removable Type

Sizes = 1/4", 3/8, 1/2"
 Max Pressure = 52 bar



Liquid & Moisture - M/F Connections

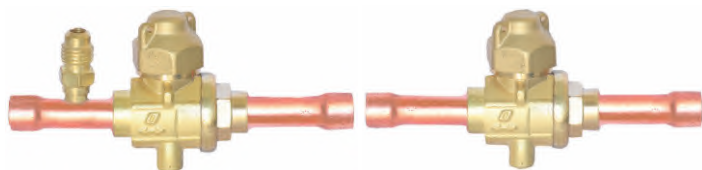
Sizes = 1/4, 3/8, 1/2"
 Max Pressure = 52 bar



Liquid & Moisture - Saddle Type

Sizes = 7/8, 1 1/8, 1 3/8, 1 5/8, 2 1/8"
 Max Pressure = 52 bar

BALL VALVES



Ball Valve - Brazing Type

Sizes = 1/4, 3/8, 1/2, 5/8, 7/8, 3/4, 1 1/8, 1 3/8, 1 5/8, 2 5/8"
 Max Pressure = 52 bar



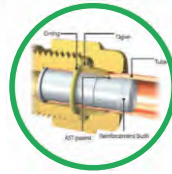
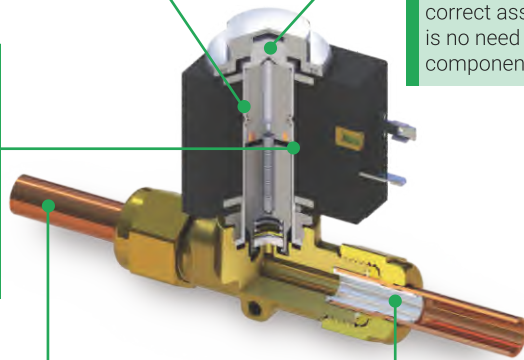
Fittings for Refrigeration Systems

NO BRAZING REFRIGERATION COMPONENTS

Sleeve made up of stainless steel rod, which offers a better resistance to the most severe applications

The fixed core is locked by rolling process, which assures mechanical deformation of the sleeve, without discontinuity points which could generate cracking.

The cup which fixes the coil to the body valve is screwed on a thread on the top of the sleeve, in order to grand easy and correct assembly. There is no need of auxiliary components.



1 EASY TO USE

Components can easily assembled and disassembled

2 SAFE

No more tedious welding. The tube is inserted directly in the OLAB FAST LOCK connection

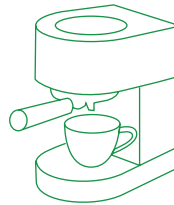
3 FULL SEALING CAPACITY

Which is ensured by a special gasket made of a compound expressly developed for these system.

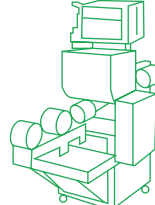
4 RELIABLE

The ogives deformation with the AST patent on the reinforcement bush, allow the safe retention of the tube in the fitting's body

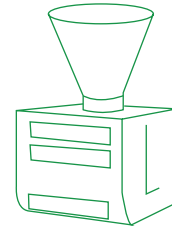
VIBRATION PUMPS



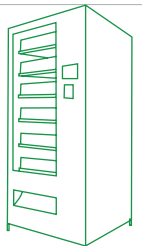
Coffee Machines



Liquid Measurement



Machines for Foodstuff

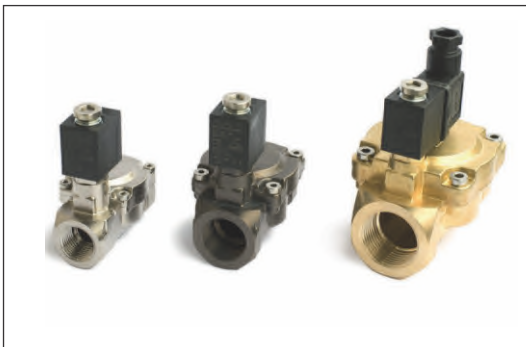


Vending Distribution

APPLICATIONS

Food and beverages, steam irons, carpet washers, medical and dental application, drink dispensers, water gasifiers, smoke machines & air conditioners.

DIAPHRAGM & DIRECT ACTING SOLENOID VALVES



3/2 Solenoid Valve Available with TM1 & TM4 Surface Treatments for Food Contact - NSF approved

3/2 Flanged Solenoid Valve with TM1 & TM4 Surface Treatments for Food Contact - NSF Approved

2/2 Solenoid Valve Available with TM1 & TM4 Surface Treatments for Food Contact - NSF approved

Vacuum Dust Collector System

Textile Industry

- Recovery of Cotton fluff and lint in textile production area
- Avoid dusty environments and optimize waste disposal
- Continuous recovery of textile trims from the production/cutting line
- Three phase blower allows vacuum to run virtually Maintenance Free for (24 x 7)



Machine Tools, Cleaning and Maintenance

- The solid and liquid components are separated via "macro-filtration", allowing the emulsion to be reused.
- Nilfisk industrial vacuum cleaner is the most appropriate tool for removing metal shavings from machine tools after each work cycle.



Glass Industry & Foundries

- In Glass production and foundries a silica-based raw material are used
- This is a very dusty material, and its preparation and use in manufacturing produces a large quantity of waste sand
- This waste material can be recovered and recycled into the production process using Nilfisk high-power vacuums.



Food Industry

- Nilfisk solutions are used in food companies to improve production efficiency, increase safety and maintain high level of hygiene.
- All of our solutions are ATEX certified and in compliance with GMP Standards.



Centralized Vacuum Systems

- CVS- The centralized Vacuum System allows to collect materials from many inlets simultaneously. Therefore, wide areas can be efficiently cleaned. Vacuumed materials are collected in one single container, placed either inside or outside the factory, making it easier for the operators to provide for their disposal or recycling.



Electrical Section



We undertake design , manufacture & installation of Electrical, Pneumatic, Electro pneumatic control systems for industrial automation. Trouble-shooting , Programming, commissioning of PLC will be done according to the customer requirements.

Service Section



We undertake servicing of hydraulic and pneumatic equipments (Hydraulic Power pack, Proportional valve testings , Pneumatic actuators, Process valves etc.,)

Project Section



Process Automation in Food, Pharmaceutical, Petrochemical, Steel, Water treatment , Automotive, Power Generation, Oil& Gas, Textile Industries



Customized Electric Scissor lift



Customized Electric Automated Furniture



MECHATRONICS

CONTROL EQUIPMENTS INDIA PRIVATE LIMITED

Registered & Corporate office

No.1, Gulam Murthaza Street
Wallajah Road, Chennai – 600 002
INDIA

bala@mechatronicscontrol.com
sales1@mechatronicscontrol.com

Factory

No.S14, SIPCOT Industrial Park
Pillaiappakkam, Kancheepuram District
Sriperumpudur – 602 602
Tamil Nadu
INDIA

Tel : 91-44-2855 8484 | 2855 8485 | 95660 06666 | 87544 06730

Branches : Delhi | Ahmedabad | Vadodara | Mumbai | Pune | Kolkata | Indore | Jamshedpur | Bangalore | Hyderabad | Coimbatore | Pondicherry

Our Group Companies



Mechatronics Industrial Equipment L.L.C

Tel:+9714 2674311, Fax:+971 4 2674312
P.O.Box:19104, Dubai, U.A.E.
E-mail: mechtron@emirates.net.ae
www.mechatronics.ae



Power Steel Contracting L.L.C

Tel: +971 6 7430741, Fax: + 971 6 7430075
P.O.Box: 14912, Ajman, U.A.E.
E-mail: powerste@emirates.net.ae
www.powersteel.ae



Mechatronics Industrial Equipment

Tel: +974 44581155, Fax: +974 4469135
P.O.Box: 39233, Salwa Road, Doha, Qatar
E-mail: mechatronics@qatar.net.qa
www.mechatronics.ae



Mechatronics Control FZE

P O Box : 263918 Jafza Dubai, U.A.E
Tel :+971 4 8806393
Fax :+971 4 8806393
E-mail: mechtron@emirates.net.ae
www.mechatronics.ae



Danika Automation Technology L.L.C

Tel: +971 2 5551255, Fax: +971 2 5551955
P.O.Box: 91183, Abu Dhabi, U.A.E.
E-mail: mechtron@emirates.net.ae
www.mechatronics.ae



Flowlines Technology L.L.C

Tel: +971 4 2676 286, Fax: + 971 4 2676285
P.O.Box: 47559, Dubai, U.A.E.
E-mail: flowline@emirates.net.ae
www.flowlines.ae



Mechatronics Industrial Equipments

P.O. Box: 70454
Sitra, Kingdom of Bahrain
Tel: +973 17280059
Fax: +973 17910045
Email: contact@mechatronicsbh.com
www.mechatronicsbh.com



Seajet Freight International L.L.C

Tel: +971 4 2573 200, Fax: +971 42573600
P.O.Box: 231932, Dubai, U.A.E.
E-mail: seajet@emirates.net.ae
www.seajet.ae